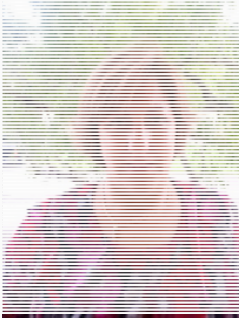


---

## **GENERAL INFORMATION**

---

### **PROFESSOR INFORMATION**



<b>Instructor:</b>	Prof. Lisa Brinn	<b>Phone:</b>	(305) 348-7619
<b>Office:</b>	OE Room #212 (MMC)	<b>Fax:</b>	(305) 3481986
<b>Office Hours:</b>	By appointment	<b>Email:</b>	Please use Blackboard course messages

---

### **COURSE DESCRIPTION AND PURPOSE**

It will be a fully online course. We will be discussing disorders that impact or alter anatomical features and diagnostic procedures whose interpretation relies on an understanding of normal human anatomy.

---

### **COURSE OBJECTIVES**

Students will be able to:

- Identify what they already know about human anatomy. Students taking this course should have a pre-knowledge about how the human body functions normally.
- Recognize which body are causing the specific disease.
- Describe how the organ systems function individually and as a whole.
- Explain what changes need to occur in order for the body to be able to function normally.

---

### **MAJOR & CURRICULUM OBJECTIVES TARGETED**

**Students should be able to understand how each specific anatomy structure works, not only isolated, but as a whole. Then, students should be able to predict what will happen when specific body parts are not functioning normally. How will this defect affect other body parts and the body as a whole?**

---

### **TEACHING METHODOLOGY**

This is a fully online course in which all of the instructional materials and activities are delivered through Blackboard, and/or other internet-based media. Some exams may require the use of an approved proctoring center. Should you have any questions, please contact the professor.

## IMPORTANT INFORMATION

---

### POLICIES

---

Please review [FIU's Policies webpage](#). The policies webpage contains essential information regarding guidelines relevant to all courses at FIU, as well as additional information about acceptable netiquette for online courses.

### TECHNICAL REQUIREMENTS/SKILLS

---

One of the greatest barriers to taking an online course is a lack of basic computer literacy. By computer literacy we mean being able to manage and organize computer files efficiently, and learning to use your computer's operating system and software quickly and easily. Keep in mind that this is not a computer literacy course; but students enrolled in online courses are expected to have moderate proficiency using a computer. Please go to the [What's Required](#) page to find out more information on this subject.

This course utilizes the following tools:

1. Blackboard
2. Any human anatomy book. The book suggested is: Human Anatomy, by Martini et al., 8<sup>th</sup> edition, ISBN: 10: 0-321-88332-2
3. Internet research

Please visit our [Technical Requirements](#) webpage for additional information.

### ACCESSIBILITY AND ACCOMMODATION

---

Please visit our [ADA Compliance](#) webpage for information about accessibility involving the tools used in this course.

Please visit [Blackboard's Commitment to Accessibility](#) webpage for more information.

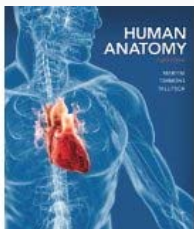
For additional assistance please contact FIU's [Disability Resource Center](#).

### COURSE PREREQUISITES

---

This course has at least one prerequisite. Review the [Course Catalog webpage](#) for prerequisites information.

## TEXTBOOK



### ***Human Anatomy (8<sup>th</sup> Edition)***

Martini, Timmons, Tallitsch

Pearson (2015)

ISBN: 13:978-0-321-88332-2

You may purchase your textbook online at the [FIU Bookstore](#).

## EXPECTATIONS OF THIS COURSE

This is an online course, which means most of the course work will be conducted online. Expectations for performance in an online course are the same for a traditional course. In fact, online courses require a degree of self-motivation, self-discipline, and technology skills which can make these courses more demanding for some students.

### **Students are expected to:**

- **Review the “how to get started information”** located in the course content
- **Introduce yourself to the class** during the first week by posting a self-introduction in the appropriate discussion forum
- **Take the practice quiz** to ensure that your computer is compatible with Blackboard
- **Interact** online with instructor and peers
- **Review** and follow the course calendar
- Log in to the course 3-4 times per week
- Respond to discussion boards, blogs, and journal postings (make sure to follow the calendar of events)
- Respond to emails/messages within 24 hours
- Submit assignments by the corresponding deadline

### **The instructor will:**

- Log in to the course at least 5 times per week
- Respond to discussion boards, blogs, and journal postings within 24 hours during the week and 48 hours on weekends
- Respond to emails/messages within 24 hours during the week and 48 hours on weekends
- Grade assignments within 48 hours of the assignment deadline

## COURSE DETAILS

### COURSE COMMUNICATION

Communication in this course will take place via messages on blackboard.

Messages is a private and secure text-based communication system which occurs within a course among its course members. Users must log on to Blackboard to send, receive, or read messages. The

“Messages” tool is located on the Course Menu, on the left side of the course webpage. It is recommended that students check their messages routinely to ensure up-to-date communication.

Visit our [Writing Resources webpage](#) for more information on professional writing and technical communication skills.

## DISCUSSION FORUMS

---

Keep in mind that your discussion forum postings will likely be seen by other members of the course. Care should be taken when determining what to post.

### Discussion Forum Expectations:

- For every module, students are required to comment on other students findings using the discussion board. Make sure that you check the calendar of events for each module as some modules might have two steps to it.
  1. The approximate length of a response should be between 100-200 words.
  2. Postings should contain ALL the resources that were used to gather the information.
  3. Students are expected to add to the discussion board at least once for 1 step modules or twice for 2 steps modules
- Modules will only be available for discussion during a specific week. Again make sure to look for those deadlines on the calendar.
- The expected turn-around time for feedback or grades in about 1 week after the deadline.

## QUIZZES

---

In order to mitigate any issues with your computer and online assessments, it is very important that you take the “Practice Quiz” from each computer you will be using to take your graded quizzes and exams. It is your responsibility to make sure your computer meets the minimum [hardware requirements](#).

Assessments in this course are not compatible with mobile devices and should not be taken through a mobile phone or tablet. If you need further assistance please contact [FIU Online Support Services](#).

### Quiz Expectations:

- After every module there will be a weekly quiz. Covered on the weekly quizzes are findings from your research material in addition to comments made on the discussion board. Quizzes are made up of 5 questions and account for 10% of your overall grade.
  - Quizzes will become available from Friday 10:00 am – Sunday 11:59 pm.
  - Quiz duration : 10 minutes
  - Students will be able to see the results and all of the questions and answers after the availability period has ended
1. Review the [Respondus LockDown Browser Instructions](#) on how to install, access your assessments and view your grades.
  2. After installing the browser, please take the Practice Quiz to familiarize yourself with the testing environment and to ensure that you have downloaded the Respondus Lockdown Browser correctly.

## ASSIGNMENTS

### Assignment Expectations:

- You will be assigned a new module each week. Make sure you read all the questions that you are expected to answer carefully. Some modules are done in one single step. Other modules have two different steps (module part I and part II).
- Please check the calendar for specific due dates on each module. Generally, each module begins on a Monday. For modules that only have one part to it, your findings should be posted on the discussion board by the following Friday at 11:59pm. Starting at 12:00am of Saturday, I would like for you to comment on other student's response that will become visible to you. These peer comments should be posted by the following Wednesday at 11:59pm. Starting the following Friday, there will be a quiz for the module where the discussion period ended. In other words, we will be working for about 2 weeks in each module. For the modules that have two parts to it, the hidden discussion period is broken down into 2 days for part I and 2 days for part II. All the rest remains the same. Again, as always, follow the calendar to avoid missing deadlines.
- Please submit your assignments using turnitin on blackboard **AND ALSO** post it on the discussion board.
- Review the detailed [Turnitin instructions](#) on how to submit your assignments and how to review the Grademark comments (feedback) from your professor.

## GRADING

Course Requirements	Number of Items	Points for Each	Total Points Available	Weight
Quizzes	13	10	130	20%
Exams	3	100	300	20%
Assignments	13	100	1300	30%
Peer Discussion	13	100	1300	20%
Turnitin	13	100	1300	10%
<b>Total</b>	<b>55</b>	<b>N/A</b>	<b>4330</b>	<b>100%</b>

Letter Grade	Range	Letter Grade	Range	Letter Grade	Range
A	Above 90	C+	75-79	D	60-64
B+	85-89	C	70-74	F	< 59
B	80-84	D+	65-69		

## COURSE CALENDAR

# JANUARY 2017

SUBJECT \_\_\_\_\_ PERIOD \_\_\_\_\_

	MONDAY	TUESDAY	WEDNESDAY	THURSDAY	FRIDAY	SAT/SUN
	2	3	4	5	6	7/8
WEEK	notes					
1	9 Module 1- skeletal system: osseous tissue and skeletal structure opens 12:00am	10 Module 1 Posting on Discussion Board (DB) begins at 12:00am (hidden*)	11 Module 1 Posting on DB (hidden)	12 Module 1 Posting on DB (hidden)	13 Module 1 Posting on DB due at 11:59pm (hidden)	14/15 Module 1 Posting on DB begins 12:00am (visible**)
WEEK	notes					
2	16 Module 2 - skeletal system: axial division opens 12:00am Module 1 Posting on DB (visible)	17 Module 2 Posting on DB begins 12:00 am (hidden) Module 1 Posting on DB (visible)	18 Module 2 Posting on DB (hidden) Module 1 Posting on DB (closes at 11:59pm)	19 Module 2 Posting on DB (hidden)	20 Module 2 Posting on DB due at 11:59pm (hidden) Quiz Module 1 (opens at 10:00am)	21/22 Module 2 Posting on DB begins 12:00 am (visible)
WEEK	notes					
3	23 Module 3 - Connective Tissue part I opens 12:00 am Quiz Module 1 (closes at 11:59pm) Module 2 Posting on DB (visible)	24 Module 3 part I Posting on DB begins 12:00 am (hidden) Module 2 Posting on DB (visible)	25 Module 3 part I Posting on DB (hidden) due at 11:59pm Module 2 Posting on DB (closes at 11:59pm)	26 Module 3 part II Posting on DB begins 12:00am (hidden)	27 Module 3 Posting on DB part II due 11:59 pm (hidden) Quiz Module 2 (opens at 10:00am)	28/29 Module 3 Posting on DB begins 12:00am (visible)
WEEK	notes					
4	30 Module 4 - integumentary part I opens 12:00am Quiz Module 2 (closes at 11:59pm) Module 3 Posting on DB (visible)	31 Module 4 part I Posting on DB begins 12:00am (hidden) Module 3 Posting on DB (visible)				
WEEK	notes					

- \* Hidden – students need to write their findings but other students don't have access to the discussion board
- \*\* visible – all students have access to the discussion board and comment on posting by their peers

# FEBRUARY 2017

SUBJECT \_\_\_\_\_ PERIOD \_\_\_\_\_

	MONDAY	TUESDAY	WEDNESDAY	THURSDAY	FRIDAY	SAT/SUN
WEEK 4			<p><b>1</b></p> <p>Module 4 part I Posting on DB (hidden) due at 11:59pm Module 3 Posting on DB (closes at 11:59pm)</p>	<p><b>2</b></p> <p>Module 4 part II Posting on DB begin 12:00am (hidden)</p>	<p><b>3</b></p> <p>Module 4 part II Posting on DB (hidden) due at 11:59pm Quiz Module 3 (opens at 10:00am)</p>	<p><b>4/5</b></p> <p>Module 4 Posting on DB begins 12:00am (visible)</p>
WEEK 5	<p><b>6</b></p> <p>Module 5 - skeletal system: appendicular division part I opens 12:00am Quiz Module 3 (closes at 11:59pm) Module 4 Posting on DB (visible)</p>	<p><b>7</b></p> <p>Module 5 part I Posting on DB begins 12:00am (hidden) Module 4 Posting on DB (visible)</p>	<p><b>8</b></p> <p>Module 5 part I Posting on DB (hidden) due at 11:59pm Module 4 Posting on DB (closes at 11:59pm)</p>	<p><b>9</b></p> <p>Module 5 part II Posting on DB begins 12:00am (hidden)</p>	<p><b>10</b></p> <p>Module 5 part II Posting on DB (hidden) due at 11:59pm Quiz Module 4 (opens at 10:00am)</p>	<p><b>11/12</b></p> <p>Module 5 Posting on DB begins 12:00am (visible)</p>
WEEK 6	<p><b>13</b></p> <p>Module 6 - muscular system: axial musculature opens 12:00 am Quiz Module 4 (closes at 11:59pm) Module 5 Posting on DB (visible)</p>	<p><b>14</b></p> <p>Module 6 Posting on DB begins 12:00am (hidden) Module 5 Posting on DB (visible)</p>	<p><b>15</b></p> <p>Module 6 Posting on DB (hidden) Module 5 Posting on DB (closes at 11:59pm)</p>	<p><b>16</b></p> <p>Module 6 Posting on DB (hidden)</p>	<p><b>17</b></p> <p>Module 6 Posting on DB (hidden) due at 11:59pm Quiz Module 5 (opens at 10:00am)</p>	<p><b>18/19</b></p> <p>Module 6 Posting on DB begins 12:00am (visible)</p>
WEEK 7	<p><b>20</b></p> <p>Module 7 - Neural tissue opens 12:00am Quiz Module 5 (closes at 11:59pm) Module 6 Posting on DB (visible)</p>	<p><b>21</b></p> <p>Module 7 Posting on DB begins 12:00am (hidden) Module 6 Posting on DB (visible)</p>	<p><b>22</b></p> <p>Module 7 Posting on DB (hidden) Module 6 Posting on DB (closes at 11:59pm)</p>	<p><b>23</b></p> <p>Module 7 Posting on DB (hidden)</p>	<p><b>24</b></p> <p>Module 7 Posting on DB (hidden) due at 11:59pm Quiz Module 6 (opens at 10:00am)</p>	<p><b>25/26</b></p> <p>Module 7 Posting on DB begins 12:00am (visible)</p>
WEEK 8	<p><b>27</b></p> <p>Module 8 - Spinal cord and spinal nerves opens 12:00am Quiz Module 6 (closes at 11:59pm) Module 7 Posting on DB (visible)</p>	<p><b>28</b></p> <p>Module 8 Posting on DB begins 12:00am (hidden) Module 7 Posting on DB (visible)</p>				

WEEK

notes

--	--	--	--	--	--



# MARCH 2017

SUBJECT \_\_\_\_\_ PERIOD \_\_\_\_\_

	MONDAY	TUESDAY	WEDNESDAY	THURSDAY	FRIDAY	SAT/SUN
WEEK 8			<b>1</b> Module 8 Posting on DB (hidden) Module 7 Posting on DB (closes at 11:59pm)	<b>2</b> Module 8 Posting on DB (hidden)	<b>3</b> Module 8 Posting on DB (hidden) due at 11:59pm Quiz Module 7 (opens at 10:00am)	<b>4/5</b> Module 8 Posting on DB begins 12:00am (visible)
WEEK 9	<b>6</b> Module 9 - brain opens 12:00am Quiz Module 7 (closes at 11:59pm) Module 8 Posting on DB (visible)	<b>7</b> Module 9 Posting on DB begins 12:00am (hidden) Module 8 Posting on DB (visible)	<b>8</b> Module 9 Posting on DB (hidden) Module 8 Posting on DB (closes at 11:59pm)	<b>9</b> Module 9 Posting on DB (hidden)	<b>10</b> Module 9 Posting on DB (hidden) due at 11:59pm Quiz Module 8 (opens at 10:00am)	<b>11/12</b> Module 9 Posting on DB begins 12:00am (visible)
WEEK 10	<b>13</b> Spring Break	<b>14</b> Spring Break	<b>15</b> Spring Break	<b>16</b> Spring Break	<b>17</b> Spring Break	<b>18/19</b>
WEEK 11	<b>20</b> Module 10 – general senses Part I opens 12:00am Quiz Module 8 (closes at 11:59pm) Module 9 Posting on DB (visible)	<b>21</b> Module 10 Part I Posting on DB begins 12:00am (hidden) Module 9 Posting on DB (visible) Exam 2 opens at 10 am (modules 5-8)	<b>22</b> Module 10 Part I Posting on DB (hidden) due at 11:59pm Module 9 Posting on DB (closes at 11:59pm)	<b>23</b> Module 10 Part II Posting on DB begins 12:00am (hidden) Exam 2 closes at 11:59 pm	<b>24</b> Module 10 Part II Posting on DB (hidden) due at 11:59pm Quiz Module 9 (opens at 10:00am)	<b>25/26</b> Module 10 Posting on DB begins 12:00am (visible)
WEEK 12	<b>27</b> Module 11 - heart part I opens 12:00am Quiz Module 9 (closes at 11:59pm) Module 10 Posting on DB (visible)	<b>28</b> Module 11 part I Posting on DB begins 12:00am (hidden) Module 10 Posting on DB (visible)	<b>29</b> Module 11 part I Posting on DB (hidden) due at 11:59pm Module 10 Posting on DB (closes at 11:59pm)	<b>30</b> Module 11 part II Posting on DB begins 12:00am (hidden)	<b>31</b> Module 11 part II Posting on DB (hidden) due at 11:59pm Quiz Module 10 (opens at 10:00am)	

# APRIL 2017

SUBJECT \_\_\_\_\_ PERIOD \_\_\_\_\_

	MONDAY	TUESDAY	WEDNESDAY	THURSDAY	FRIDAY	SAT/SUN
WEEK 11 K						1/2 Module 11 Posting on DB begins 12:00am (visible)
WEEK 12 K	3 Module 12 –blood vessels opens 12:00am Quiz Module 10 (closes at 11:59pm) Module 11 Posting on DB (visible)	4 Module 12 Posting on DB begins 12:00am (hidden) Module 11 Posting on DB (visible)	5 Module 12 Posting on DB (hidden) Module 11 Posting on DB (closes at 11:59pm)	6 Module 12 Posting on DB (hidden)	7 Module 12 Posting on DB (hidden) due at 11:59pm Quiz Module 11 (opens at 10:00am)	8/9 Module 12 Posting on DB begins 12:00am (visible)
WEEK 13 K	10 Module 13 – digestive Part I opens 12:00am Quiz Module 11 (closes at 11:59pm) Module 12 Posting on DB (visible)	11 Module 13 Part I posting on DB begins 12:00am (hidden) Module 12 Posting on DB (visible)	12 Module 13 Part I posting on DB (hidden) due at 11:59pm Module 12 Posting on DB (closes at 11:59pm)	13 Module 13 Part II Posting on DB begins 12:00am (hidden)	14 Module 13 Part II Posting on DB (hidden) due at 11:59pm Quiz Module 12 (opens at 10:00am)	15/16 Module 13 Posting on DB begins 12:00am (visible)
WEEK 14 K	17 Quiz Module 12 (closes at 11:59pm) Module 13 Posting on DB (visible)	18 Module 13 Posting on DB (visible)	19 Module 13 Posting on DB (closes at 11:59pm)	20	21 Quiz Module 13 (opens at 10:00am)	22/23
WEEK 15 K	24 Quiz Module 13 (closes at 11:59pm)	25 Exam 3 opens at 10am (modules 9-13)	26	27 Exam 3 closes at 11:59 pm	28	29/30

